

READ ME ! ⚠

Thank you for purchasing a Jeep JL Rear Door Molle.

Before you start, take a moment to familiarize yourself with the Fitting Instructions and the included components.

Refer to Page 2 for a list of all the components, quantities and tools required.

IMPORTANT WARNING! ⚠

IT IS CRITICAL THAT ALL FRONT RUNNER PRODUCTS BE PROPERLY AND SECURELY ASSEMBLED AND ATTACHED TO YOUR VEHICLE. IMPROPER ATTACHMENT COULD RESULT IN AN AUTOMOBILE ACCIDENT, AND COULD CAUSE SERIOUS BODILY INJURY OR DEATH. YOU ARE RESPONSIBLE FOR ASSEMBLING AND SECURING ALL FRONT RUNNER PRODUCTS TO YOUR VEHICLE, CHECKING THE ATTACHMENTS PRIOR TO USE, AND PERIODICALLY INSPECTING THE PRODUCTS FOR ADJUSTMENT, WEAR AND DAMAGE. THEREFORE, YOU MUST READ AND UNDERSTAND ALL OF THE INSTRUCTIONS AND PRECAUTIONS SUPPLIED WITH YOUR FRONT RUNNER PRODUCT PRIOR TO INSTALLATION OR USE. IF YOU DO NOT UNDERSTAND ALL OF THE INSTRUCTIONS AND CAUTIONS, OR IF YOU HAVE NO MECHANICAL EXPERIENCE AND ARE NOT THOROUGHLY FAMILIAR WITH THE INSTALLATION PROCEDURES, YOU SHOULD HAVE THE PRODUCT INSTALLED BY A PROFESSIONAL INSTALLER OR OTHER QUALIFIED PERSONNEL.

NOTE: Front Runner will not be responsible for any damage caused by the failure to install the product according to these instructions.

Please call us if you have any questions about the installation of this product.

1

GET ORGANIZED

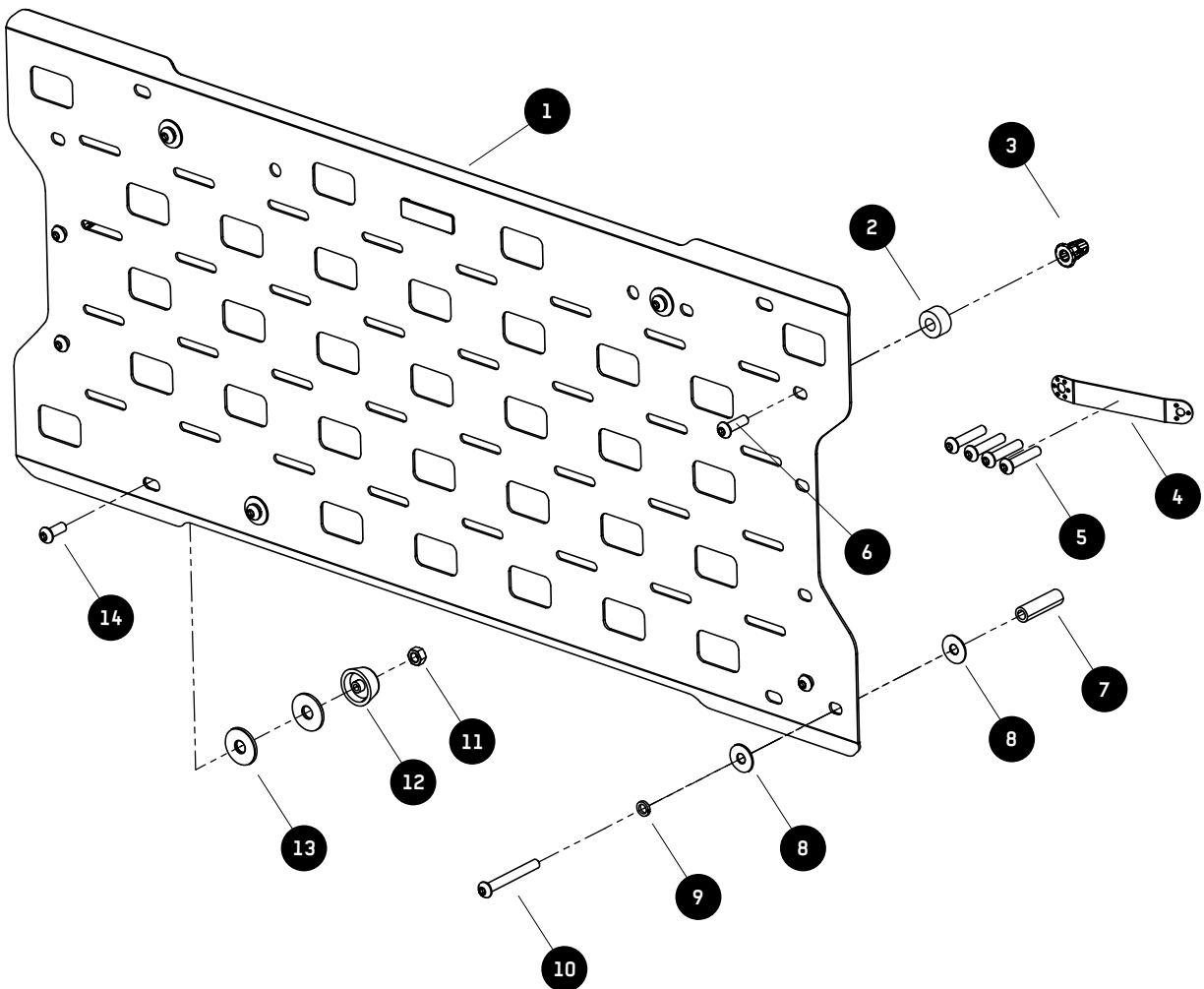
IN THE BOX

1	1 X	Rear Door Molle Panel
2	4 X	10mm Spacer
3	4 X	M6 Jack Nut
4	1 X	Jack Nut Tool
5	4 X	M6 x 30 Button Head Bolt
6	4 X	M6 x 20 Button Head Bolt
7	4 X	35mm Spacer
8	8 X	M6 x 19 Flat Washer
9	4 X	M6 Spring Washer
10	4 X	M6 x 50 Button Head Bolt
11	1 X	M6 Nyloc Nut
12	1 X	Rubber Stopper
13	2 X	M8 x 25 Flat Washer
14	1 X	M6 x 16 Button Head Bolt

TOOLS NEEDED



FIGURE 1.1



2.1



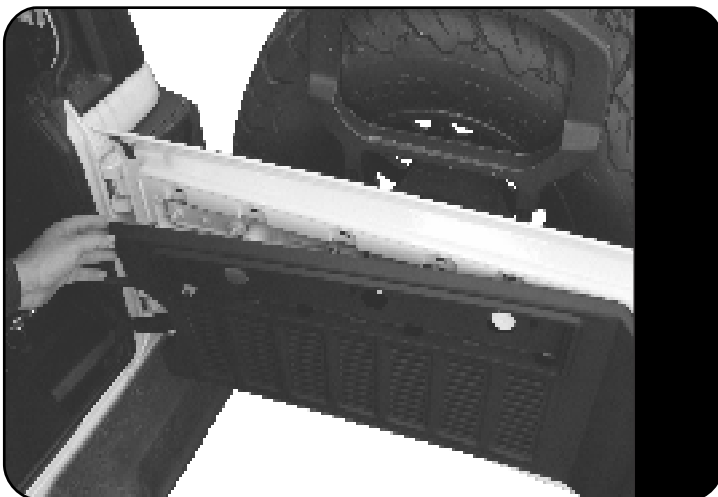
Remove the trim panel from the rear door by carefully unclipping it with a panel tool or other similar tool.

2.2



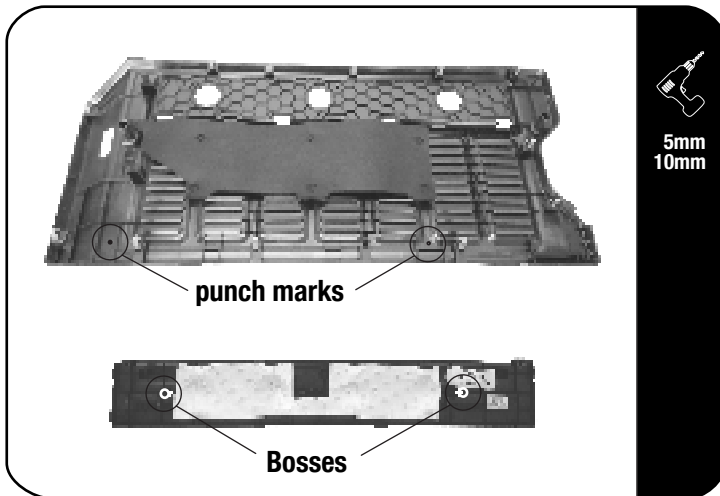
If your vehicle has the cargo Rail fitted, remove it by loosening and removing the three bolts shown.

2.3



Remove the trim panel.

2.4



At the inside of the trim panel, locate the two factory indicator punch marks.

Using a 5mm drill bit, drill pilot holes on these marks. Open the holes with a 10mm drill bit.

On the inside of the smaller top trim panel, locate the two round bosses shown.

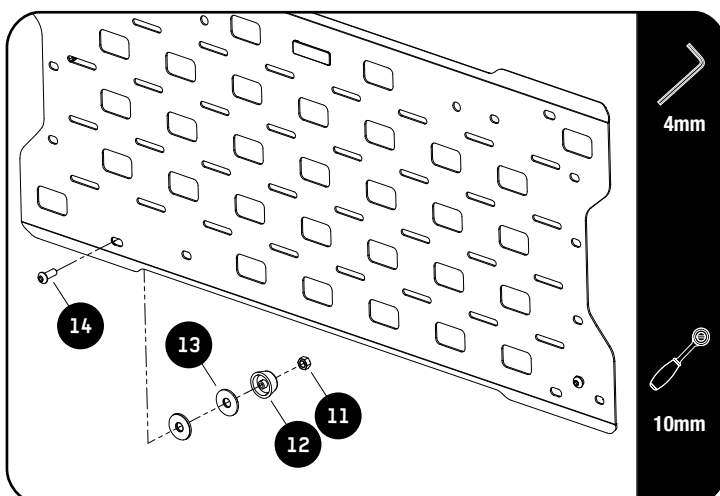
Using an 5mm drill bit, drill pilot holes in the center of each boss. Widen the holes using a 10mm drill bit

2.5



Refit the two trim panels to the rear door.

2.6

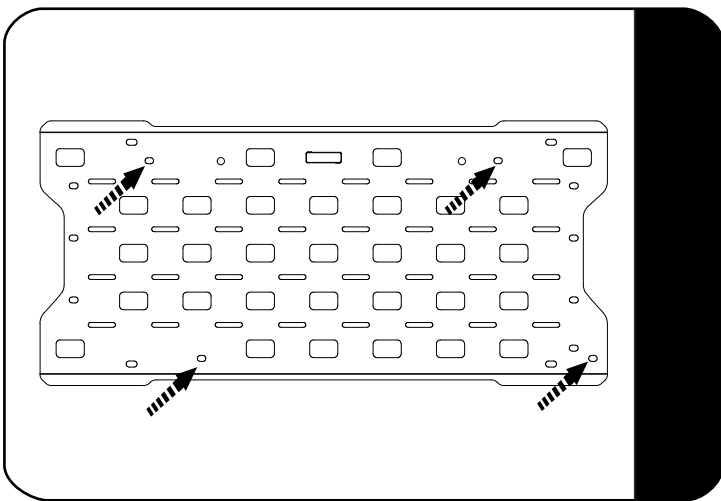


Secure the Rubber Stopper (Item 12) to the Rear Door Molle Panel (Item 1) using an M6 x 16 Button Head Bolt, M8 x 25 Flat Washers & M6 Nyloc Nut (Items 11, 13 & 14) as shown.

2

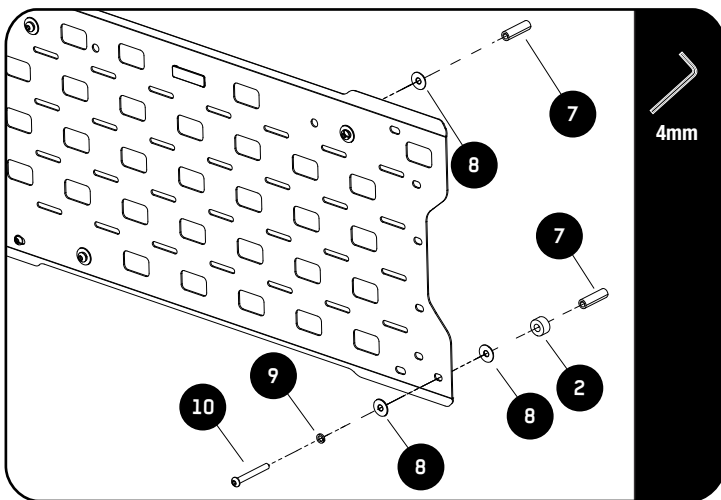
FIT AND SECURE TOO JEEP JL

2.7



 Note: The mounting holes used for the Jeep JL installation.

2.8



 Insert four 35mm Spacers (Item 7) in the holes drilled earlier in the trim panels.

Loosely fit the Molle Panel through the two top holes indicated in 2.7 using M6 x 50 Button Head Bolts, M6 Spring Washers and M6 x 19 Flat Washers (Items 8, 9 & 10).

Add a 10mm Spacer (Item 2) too the two bottom holes indicated in 2.7 before securing the Molle panel using M6 x 5 Button Head Bolts, M6 Spring Washers, M6 x 19 Flat Washers (Items 8, 9 & 10) as shown.



Tightening Torque:

M6 : 8-10Nm / 5.9 ft lb - 7.38 ft lb

3

FINISH

Congratulations! You did it. Take a step back and admire your work!

4

INSTALL OTHER VEHICLE AND RACK ACCESSORIES

Now's the time to visit your favorite Front Runner Dealer in person or online.

Be sure to tag us. We love to see our gear in action! #FrontRunnerOutfitters

Share your adventures on:

